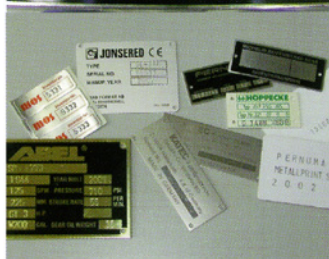
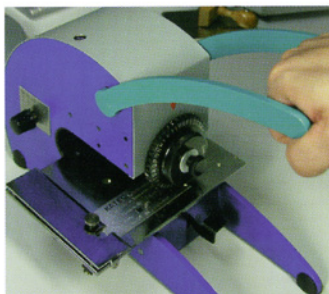
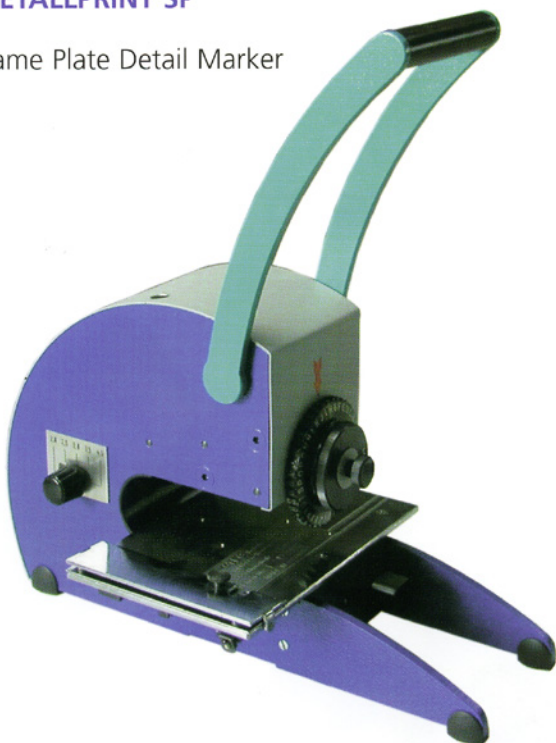


## Name Plate Detail Marker

Manual name plate detail marker in two sizes for multiple application in workshop and industrial areas.

Perfect machines for marking of small and quickly changing number and letter combinations.

The feed table is equipped with a lateral clamping stop for the type plate and with line marks for feeding.



### Wheel on demand (interchangeable)

Engraving: A - Z 0 - 9 / , - +

### Size of type

2,0; 2,5; 3,0; 3,5; 4,0; 4,5 or 5,0 mm

### Special design

1,0; 1,5; 5,5 + 6,0 mm

### Special Options

- working table for key marking, for lock-cylinder marking, or for credit-card marking by means of an automatic foil transport and special foils
- feeding table with semi-automatic adjustment in x-y-direction
- feeding tables for extra large plates

Further marking machines for most different applications and different numbering heads.

### Technical Data

#### Installation surface

SP I	320 x 90 mm
SP II	420 x 135 mm

#### Height

SP I	303 mm
SP II	445 mm

#### Weight

SP I	gross/net about	ca. 7,3/6,6 kg
SP II	gross/net about	ca. 12,5/11,5 kg

#### Depth of Throat

SP I	ca.100 mm
SP II	ca.140 mm

#### For max. size of plates

SP I	140 x 90 mm
SP II	180 x 130 mm

#### Max. thickness of plates

SP I	3 mm
SP II	4 mm



L. VILLA & Figlio srl

Via Statuto, 4-20121 MILANO

Tel. 02/6599562 Fax 02/6590889

www.villamark.it - info@villamark.it